

PRODUCT PROFILE

BULLETIN 700-FF

BULLETIN 700-FF FIXED TIME DIN RAIL TIMING RELAY

Allen-Bradley is continuing to expand our offering of DIN Rail mounted Timing Relays by introducing the 700-FF Fixed Time DIN Rail Timing Relay.

The ultra-thin, 22.5 mm wide, molded enclosure will save considerable mounting space on the DIN rail and provide reduced power consumption.

The fixed time feature of the 700-FF makes it a cost-effective alternative to the adjustable timer. DIN Rail mounting capability eliminates the cost of a socket.

ADVANTAGES

- Electromechanical SPDT or DPDT Contact output
- Fixed Timing available between 0.1 seconds to 10 hours
- Specific part number predetermines time and function settings making them tamper resistant in the field
- More cost effective than fully featured models
- DIN rail mount allows increased accessibility for quick and easy installation
- Dust, moisture and impact-resistant molded plastic case
- Utilizes the 1492 Fast Track™ Marker System

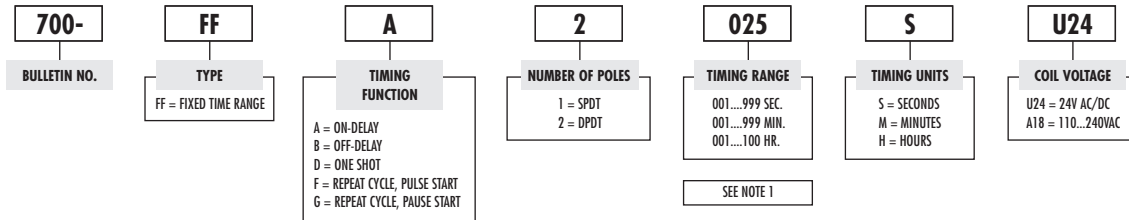


- Five Single Functions Available
 - On-Delay
 - Off-Delay
 - One Shot
 - Repeat Cycle, Pulse Start
 - Repeat Cycle, Pause Start

ESSENTIAL COMPONENTS.
EXCEPTIONAL VALUE.

PRODUCT SELECTION, SPECIFICATIONS

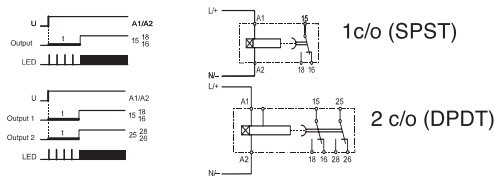
700-FF with Fixed Time Range



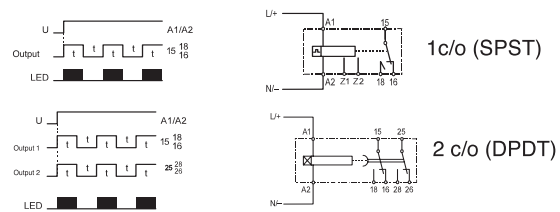
NOTE 1:
THIRD POSITION IS DECIMAL POINT (025S = 2.5 SECONDS, 025M = 2.5 MINUTES, 025H = 2.5 HOURS).

700-FF Function and Connection Diagrams

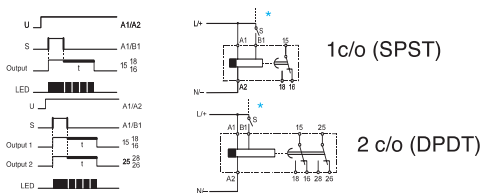
(A) On-Delay



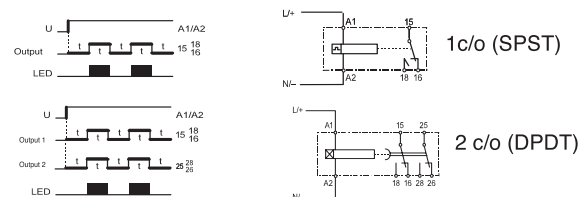
(F) Flasher (Repeat Cycle Starts with Pulse)



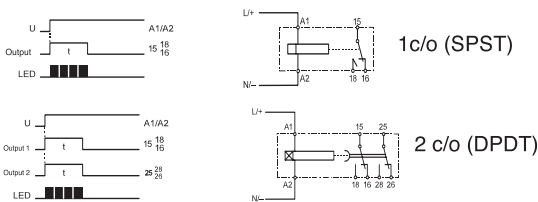
(B) Off-Delay (Min. Pulse AC 50 ms....DC 30 ms)



(G) Flasher (Repeat Cycle Starts with Pause)



(D) One Shot



Cleverly Designed Function Display LED (Green)

- Output in rest position, no timing
- ||||| Output in rest position, time running
- Output in operation position, no timing
- ■ ■ ■ Output in operation position, time running

* A VOLTAGE OTHER THAN THE SUPPLY VOLTAGE CAN BE USED AT B 1, BUT MUST BE WITHIN VOLTAGES SPECIFIED ON TIMER.

www.rockwellautomation.com

Power, Control and Information Solutions Headquarters

Americas: Rockwell Automation, 1201 South Second Street, Milwaukee, WI 53204-2496 USA, Tel: (1) 414.382.2000, Fax: (1) 414.382.4444
 Europe/Middle East/Africa: Rockwell Automation, Vorstlaan/Boulevard du Souverain 36, 1170 Brussels, Belgium, Tel: (32) 2 663 0600, Fax: (32) 2 663 0640
 Asia Pacific: Rockwell Automation, Level 14, Core F, Cyberport 3, 100 Cyberport Road, Hong Kong, Tel: (852) 2887 4788, Fax: (852) 2508 1846